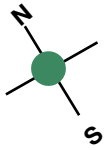


Rough Guide to Cromwell Bottom Local Nature Reserve

Avocet and parking available, leading to Brookfoot Lock - join the towpath.



postcode HD6 2RG
GPS N53.35.518
W001.50.272

Elland

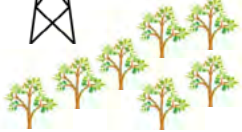
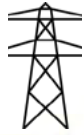
A6025
Elland Road

Brighouse

Cromwell House

Oils Well

Hérons can be seen here



Cromwell Drive leads to Reserve and parking



Freemans Lock

Lagoon viewing platform

Access to reserve from towpath

Cromwell Bridge/Lock

Canal Towpath

Pixie Wood

Calder and Hebble Navigation
Sphagnum Bog

Railway - Brighouse (and beyond) to Hebden Bridge (and beyond)

River Calder

YOU ARE HERE - BRIDGE

Visitor Centre and Education Area ~ Refreshments, information about the Reserve and Nature. Toilets available ~ open Tues/Thurs/Sun 10am-4pm.



Sand Martin wall

River path

Lagoon and Reedbed

Small Pond

Little Hay Meadow

Tag Cut

Large Hay Meadow

Weir

Pond Dipping Platform

R

Radar key required to open metal 'Kissing Gates' for full wheelchair access.



Bird Viewing, feeding and photography area.



Bailey Bridge - metal, wide, accessible.

Suggested Routes (by no means definitive)



All red routes accessible for all users.
Dashed line, not accessible for all users.

River path - this is accessible up to a point but note there is a small wooden bridge (accessible) but then please note steps leading up, or down, depending upon your point of view! Marked with black zigzag on the map.

Woodland Walk - turn left after entering reserve from towpath at Cromwell Lock. Not at all accessible, bumpy, narrow, roots on path, lined by trees, dead end at bottom.

Indoor and outdoor seating at visitor centre

Education area - no public access without arrangement