

## Where it is, how to get there and what the Reserve offers you ...

Cromwell Bottom Local Nature Reserve covers an area of around 76 acres of diverse habitat, including flower meadows, dry and wet woodland, ponds and a lagoon. It is a place of natural beauty and tranquillity, highly regarded as one of Calderdale's prime sites for wildlife.

When travelling on the A6025 between the towns of Brighouse and Elland, look out for the brown road signs bearing the name of the reserve, turn off and in 300 yards car parking is available on your left. Access the reserve by walking over the canal bridge and through a kissing gate.

### Postcode HD6 2RG

The reserve offers a variety of predominantly level walking routes up to 1.5 miles, with benches on most routes (see map overleaf) Almost all the site is fully accessible for wheelchair users who will need a radar key to access parts of the site. There are cycle racks in 2 places on the edge of the reserve, but cycling is not permitted anywhere within the reserve itself ie. beyond any of the kissing gates.

There is a Visitor Centre where information about the reserve is available and open Tuesdays, Thursdays and Sundays 10am–4pm. Volunteers serve refreshments throughout the year, payment for which is on a donation basis and proceeds go towards sustaining the reserve. Toilets, including access toilet are open on the above days.

Dog walkers are advised to respect the environment and other visitors by cleaning up after your dog, using the bins provided, and keeping close control of your dog at all times. Allowing your dog to stray off the recognised routes is a potential threat to wildlife.

## About Cromwell Bottom Wildlife Group

We are a group of committed volunteers, passionate about wildlife, who work together for the conservation of the site and warmly welcome visitors and groups. We benefit greatly from productive partnerships with local organisations, in particular, Calderdale's Countryside Service who provide valuable leadership and practical support across many projects.

All our funding comes through donations and grants.

We volunteer on Tuesdays and Thursdays on a variety of tasks and projects, with additional volunteers who run the cabin on Sundays. A volunteer day is also held on the second Saturday of each month, led by Calderdale Countryside Service.

**CBWG is a registered charity  
number 1176233.**

**For further information please visit ~**

[cromwellbottomlnr.co.uk](http://cromwellbottomlnr.co.uk)



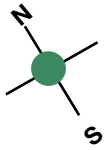
# Cromwell Bottom Local Nature Reserve



## Guide for Visitors

# Rough Guide to Cromwell Bottom Local Nature Reserve

Avocet and parking available, leading to Brookfoot Lock - join the towpath.



postcode HD6 2RG  
GPS N53.35.518  
W001.50.272

Elland

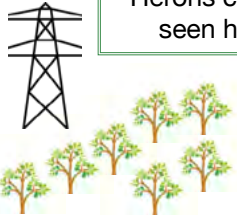
A6025  
Elland Road

Brighouse

Cromwell House

Oils Well

Hérons can be seen here



Cromwell Drive leads to Reserve and parking



YOU ARE HERE - BRIDGE

**Visitor Centre and Education Area** ~ Refreshments, information about the Reserve and Nature. Toilets available ~ open Tues/Thurs/Sun 10am-4pm.

Sand Martin wall

Education area only

Freemans Lock

Access to reserve from towpath

Lagoon viewing platform

Canal Towpath

Calder and Hebble Navigation  
Sphagnum Bog

Cromwell Bridge/Lock

Pixie Wood

Wet Woodland

Railway - Brighouse (and beyond) to Hebden Bridge (and beyond)

Lagoon and Reedbed

River path

Little Hay Meadow

Tag Cut

Small Pond

Large Hay Meadow

Weir

Pond Dipping Platform

- Radar key required to open metal 'Kissing Gates' for full wheelchair access.
- Bird Viewing, feeding and photography area.
- Bailey Bridge - metal, wide, accessible.

## Suggested Routes (by no means definitive)

All red routes accessible for all users.  
Dashed line, not accessible for all users.

River path - this is accessible up to a point but note there is a small wooden bridge (accessible) but then please note steps leading up, or down, depending upon your point of view! Marked with black zigzag on the map.

Woodland Walk - turn left after entering reserve from towpath at Cromwell Lock. Not at all accessible, bumpy, narrow, roots on path, lined by trees, dead end at bottom.

Indoor and outdoor seating at visitor centre

Education area - no public access without arrangement