

ABOUT CROMWELL BOTTOM WILDLIFE GROUP

CBWG is a group of committed volunteers dedicated to the conservation and development of this important nature reserve. We have many members and are always looking out for more people to join us.

CBWG, in partnership with Calderdale Council Public Services Directorate, manages 74 acres of varied habitat including flower meadows, dry and wet woodland, lagoon, a pond dipping platform and bird feeding areas.

If you would like to come and help here are our days, meet at 9.30am.

Second Saturday of every month run by CCPSD.

Every Thursday morning run by CBWG.

Our work parties will make you very welcome. Tasks include grass and reed cutting, tree planting and pruning, restoration of paths, maintenance of feeding stations and nest boxes. You can also help in the Cabin on a Sunday!

We can guarantee you a very warm welcome, a sense of achievement, plenty of laughs and jollity with like minded people!

WHERE IT IS, HOW TO GET THERE AND WHAT'S AVAILABLE

The Reserve is located just off the major road A6025 between Brighouse and Elland. You can follow the brown tourist information signs which indicate it is 300 yards away. Follow the road to the car park and walk over the bridge to the entrance of the Reserve. Laying beside the River Calder and surrounded by fields and woodlands, this diverse site is one of the most important for wildlife in Calderdale.

Cabin and toilets open 10.00-4.30 Sundays (Summer) and 10.00-4.00 (Winter).

You can stop for a chat, get information about wildlife, have refreshments such as tea, coffee, soup, delicious cakes and buns. There is no charge but we really appreciate donations which go towards purchasing birdfeed, nest boxes, to name but a few items!

Our blogsite has up to the minute information - just google **cromwell bottom wildlife group**

Cromwell Bottom Wildlife Group is a Registered Charity number 1176233



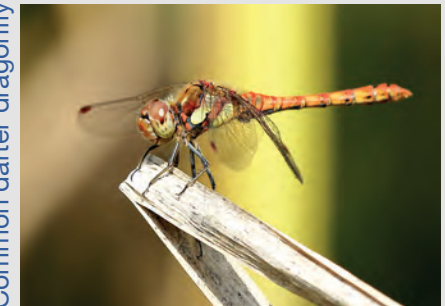
Please like us on Facebook!

CROMWELL BOTTOM LOCAL NATURE RESERVE

Nuthatch



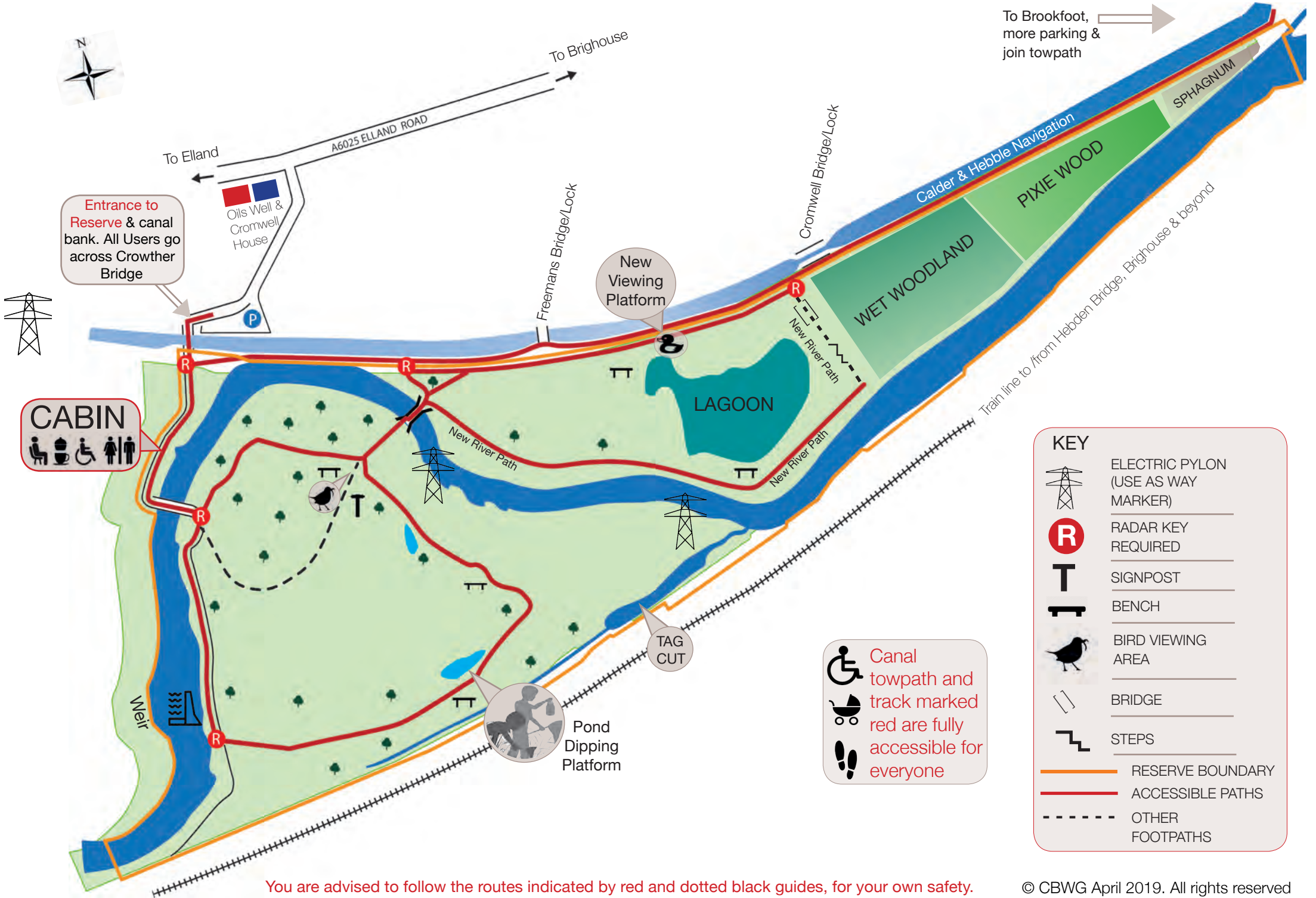
Common darter dragonfly



Kingfisher (f)



INFORMATION FOR VISITORS



You are advised to follow the routes indicated by red and dotted black guides, for your own safety.

KEY	
	ELECTRIC PYLON (USE AS WAY MARKER)
	RADAR KEY REQUIRED
	SIGNPOST
	BENCH
	BIRD VIEWING AREA
	BRIDGE
	STEPS
	RESERVE BOUNDARY
	ACCESSIBLE PATHS
	OTHER FOOTPATHS

Canal towpath and track marked red are fully accessible for everyone