



 [newsletter.cbwg@gmail.com](mailto:newsletter.cbwg@gmail.com) (Click to go)

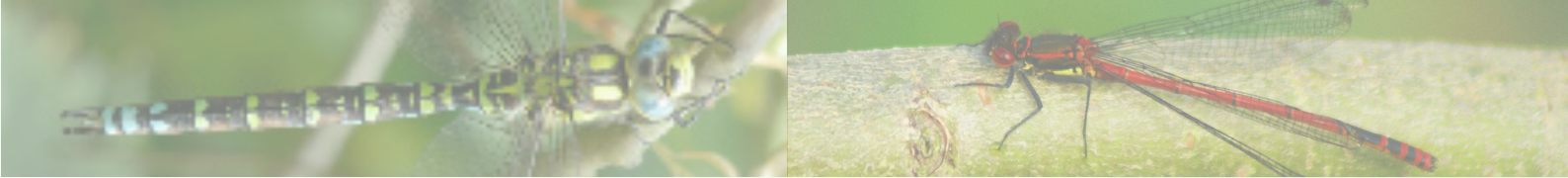
WINNER OF THE NEWSLETTER PHOTOGRAPHIC COMPETITION  
STEVE MIDGELEY

**“A BRUSH WITH NATURE”**



<https://www.wildlifepirate.co.uk>

“I had wandered off down a new path and had just got to the top when this fox casually wandered through the grass toward me. As I started taking pictures the shutter noise caught its attention and its ears pricked up. The fox didn't seem scared by my presence and slowly walked off about it's business before stopping to just check me out one last time. It looked healthy and well fed and it certainly made my day. The fox has always been a favourite of mine and top of my list to photograph.”



## LETTER FROM THE CHAIR, CBWG

As I look forward to

summer I am reminded that it has been a very productive time for us at CBWG. Members will now be aware that CBWG has now become a registered charity. In many ways, it is a sign of the way we have been developing and growing as a voluntary organisation over recent years. We believe that being a registered charity will enable us to continue the work we do in making Cromwell Bottom Local Nature Reserve a great place for people and for wildlife. On that last note. Many of you will be aware that as part of our five year plan, which Graham Haigh put together when he was Chair, we planned for work being done in a number of key areas:

(i) Cutting back the trees that were invading the lagoon area and putting it at risk from reverting to a woodland.

(ii) Putting a path down by the river to make a circular walk that would provide a better experience, especially in winter, for our visitors.

(iii) The placing of a Sand Martin Wall on North Loop.

Most of the trees have now been cut back, the path down by the river has been laid and the Sand Martin Wall is in place awaiting its first occupants. As a bonus, we have erected a barn owl box on North Loop.

I would like to offer a big thanks to everyone who have made the plans we made some time ago become a reality. Hopefully, there will be even more good news to celebrate and share in the not too distant future regarding the reserve and North Loop.

Allan

## IN THIS ISSUE

p.2 Spotlight on Volunteers

p.3 Bird Surveys at Cromwell Bottom

p.4 Aviva Benches

p.5 Feature 1 - Hoverflies

p.6, 7 Feature 2 - All About Honey Bees

p.8 Puzzle Page

p.9 Events & Information includes:

**Tree Walks with Bel Hale.**

Page banner images - Southern Hawker dragonfly - credit Barry Nield; Red Darter dragonfly - credit Mike Henshaw.



## SPOTLIGHT ON VOLUNTEERS - MEET MARTIN STAPLES



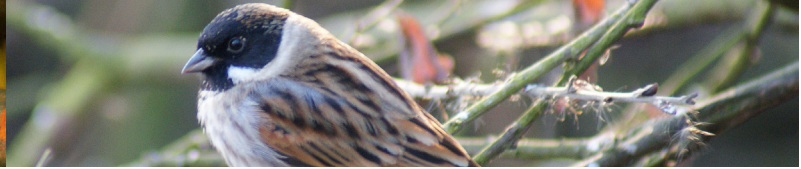
I became a member of the Cromwell Bottom Wildlife group as recently as October 2017 having recently retired from a career in teaching. It had always been my intention to do more voluntary work having been a member of the Radio Calderdale Sports Team for many years. I have always had a love of the outdoors, being a regular visitor to the Lake District, Wales and Scotland. However, I had never visited the Cromwell Bottom site despite it being a local landmark. I was aware of the excellent work the group carries out and on my first visit for a Thursday work meet I was immediately made welcome.

Those who regularly attend on a Thursday bring a wide range of skills and the variety of jobs to be completed means there is always something you can do to make a valuable contribution. Working outdoors is a pleasure after a lifetime in the classroom, even in the harshest of weathers!

I would urge people to consider becoming both a member and/or volunteer knowing that you are helping to preserve and maintain this wonderful asset on our doorstep. Work meetings take place on Thursdays and Saturdays and mugs of tea are in plentiful supply.

I'm so glad I made the decision to join, meeting friendly and interesting people who all take a pride in making a difference.





## BIRD SURVEYS AT CROMWELL BOTTOM ARTICLE AND ALL IMAGES BY MIKE HENSHAW

Meadow pipit



Having been a regular visitor to Cromwell Bottom for over 50 years I have seen many changes – from farmland to gravel pits then fly ash lagoons, then to a tip, followed by landscaping into the area that we now can walk around and enjoy!

The bird species have changed because of the varied habitats. It is now possible, because of the surveys and sightings, that we are now building up a good picture of the status of all the flora and fauna of the reserve.

Since 2007 many species have been recorded such as Cuckoo, Hobby, Peregrine, Red Kite, Little Egret, Green Sand piper, Water Rail, Hen Harrier and Osprey. Because of the feeding regime Redpolls and Siskins are easily seen along with many other species. The surveys also help us build a picture for future management of the reserve and we now have over the last 3 years Linnet, Skylark and Meadow Pipits regular in one area and we also hope for breeding Lapwings in the near future. We have installed a new Sand Martin wall, as reported in the last issue of the newsletter, and we hope for those visitors too.

It is not just birds that we survey! We monitor plants that are rare to Calderdale and some of the areas are fenced off to avoid destruction. We do Orchid counts too and monitor Butterfly, Dragonfly and Damselfly on the reserve.

With the increase in house building in our area Cromwell Bottom Nature Reserve will become a green oasis for people to enjoy in the future, away from the madding crowd, so if you walk round the reserve tell us what you see so we can update our records and knowledge for the future.



Sedge warbler

Siskin



Little Egret



Common Tern

## BIRD SURVEYS CONTINUED ....

When we are on our surveys many people ask where the notes end up.

Firstly they are logged on the site and group records and then passed on to the recorder of the Halifax Birdwatchers club for a yearly publication for Calderdale. They are then passed to the British Trust for Ornithology (BTO) who put the information onto their national database, which has records for the whole of the UK and Europe.

To put this into perspective in 2017 they had over 6 million records on their database! The information is continually gathered and in the last 4 year survey from 2007 - 2011 over 1700 of us took part and the results were published in the Bird Atlas of Breeding and Wintering Birds of Britain and Ireland. This will be used as a reference work for many years to come, including the government of the day.

So, our notebook and pen is the start of a long journey for our site records and please do bear in mind that we take notes on every visit and not just on survey days!

Why not join myself and Jane Uttley, who plays a huge part in the recording process too - the third Saturday of every month, meet at the Cabin at 9.45 and have a walk round the reserve. You will be amazed at what you can find!

Do please check our blogsite, details on the back page.

## BUMS ON SEATS AT THE BOTTOM!

### A REPORT OF AVIVA GRANT FUNDING - MAGARET C. WRITES ...

#### Good News!

Last year we asked for your votes to gain a £1000 grant for some benches around the reserve. We received over 900 votes from our members and friends but sadly that wasn't quite enough. But..... fast forward a few weeks and what a surprise we had when Aviva Community Fund got back in touch with us.

One of the successful projects was unable to go ahead and we were next in line, so we now have our grant. We have ordered three high quality hardwood benches from a local company and they should be in place by summer so everyone can enjoy a pause in their walks around Cromwell Bottom.

Thank you for your suggestions on where to site the benches – we hope you find one somewhere near your favourite spot, preferably on a lovely sunny day!



(just a little clipart illustration!!)

## UNDENIABLY INTERESTING FACTS ABOUT HOVERFLIES - IMAGES & ARTICLE ALLAN WOLFENDEN

**When the warmer weather arrives** it is a time when insects on the reserve become active. One particular insect always gets my attention, it is the Hoverfly. Hoverflies are attractive hyper-active flies that can be found darting backwards and forwards and often hover over the flowering plants they like to feed on. Only a few millimetres in size, they are like miniature helicopters, brightly coloured they can be mistaken for wasps or bees. This mimicry is part of their survival strategy, tricking any potential predators into thinking they are dangerous. They are the great pretenders of the insect world. In fact far from being dangerous, hoverflies are harmless as they can neither bite or sting . Though they capitalise on looking very similar to wasps and bees they are in fact other notable differences other than not having a sting. One notable difference between hoverflies and wasps is in the size and placement of their antenna. The antenna of the hoverfly is much smaller than that of the wasp and is situated on the front of the head. (See photo) Another notable difference is in the shape of their abdomen. Again, unlike wasps, hoverflies have only one pair

Volucella pullicens

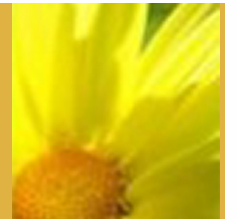


of wings that are usually held backwards in a V shape when resting. Because of they feed on the nectar of flowering plants, hoverflies are important for the pollination of the flowers which they visit to feed on. It has been suggested that they are the second most important group of pollinators, after wild bees.

Volucella zonaria



Look out for the different hoverflies that can be found on the reserve. Volucella pellucens, Volucella zonaria, Helophilus pendulus and Syryphus ribesii are some of my favourites that I love to photograph.  
Allan



Helophilus pendulus



Syryphus ribesii



FEATURE - HONEY BEES IN CALDERDALE  
A NEWSLETTER TEAM SPECIAL VISIT TO THE APIARY  
OF  
ROGER POOL, CHAIR OF HALIFAX AND DISTRICT BEEKEEPERS ASSOCIATION

ARTICLE - LYNDA ORCHARD, JANE UTTLEY



Forages laden with willow pollen returning to hive  
Image credited to Roger Pool



Image credited to Christine Balshaw, professional photographer, HBKA



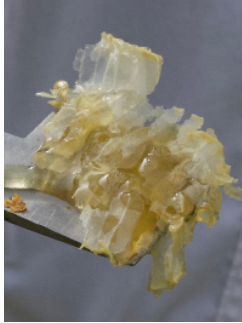
Roger, Jane & Lyn at the hives



The Newsletter team were invited (or did we ask?!) to visit Roger Pool, chair of Halifax Bee Keepers Association, to his apiary in Ripponden. On 6th April we set off with some trepidation to a field where Roger had several hives. We donned our white suits and head gear (or rather Val didn't, on the spurious grounds of taking photos instead) and off we went straight into the centre of things.

Roger had been worried that there would be no activity as the weather had been cold and damp. Fortunately for us, it was a lovely warm afternoon, the second in a row and when we got close to the hives, Roger was delighted and relieved to see that the bees were flying and had been collecting willow pollen. The returning bees had the baskets on their legs full of bright yellow pollen ready for the workers to use inside the hive to feed the colony. He told us that over winter the colony feeds on the honey made last season and that one of the best sources of pollen and nectar in the autumn is balsam. (Don't shoot the messenger!)

(continued overleaf)



HONEY



LYNDA



JANE



He then opened up one of the hives to show us what was happening inside. He explained that the majority of the 30,000 bees in the hive are female, predominantly workers, who do everything to keep the hive healthy and productive. They guard the entrance to the hive to keep strangers out, they build the comb, tend the queen, feed the larvae, and the drones, even fanning the hive with their wings to keep it cool in the summer. These workers work really hard spending 3 weeks as house bees and three weeks as gatherers.

The few males in the hive are called drones and their only purpose in life is to fertilize the queen. When new queens hatch they fly out of the hive to meet up with the drones. The queens mate with several of them and retain the sperm inside them for the rest of their lives – two to three years. This means that all of the thousand eggs that she lays each day will be fertile.

The workers feed a few larvae on royal jelly, which is a mixture of nectar and honey, and these will become queens.

When the workers decide that the queen is becoming too old they release pheromones to stimulate the queen larvae to hatch. The first one to do so kills all the other queens to ensure her place. It's tempting to think, as I did, that the queen is in charge of the hive but in reality, she's just an egg laying machine. The workers take care of everything including driving out the old queen. They bully her until she leaves the hive, taking half of the workers with her in a swarm to form a new colony.

Roger has some smaller, insulated breeding hives where queen larvae are collected to give to others setting up new hives. These bees are given a sugar solution and protein mix over the winter to give them the best start.

All in all, we had a brilliant time at the Apiary and the Newsletter Team, along with CBWG, would like to express our thanks to Roger Pool. We hope you and your bees have a very successful year.

FOR FURTHER INFO PLEASE CLICK ON THE LINK BELOW:

<http://www.halifaxbeekeepers.co.uk>



# WILDLIFE GROUP PUZZLE PAGE

## WORD SEARCH - ANSWERS IN THE CABIN

COMPILED BY THE WINNER OF THE LAST PUZZLE - DAN BUCKLE

### FIND 20 COMMON UK MAMMALS

For the correct answers to this puzzle please see Lyn in the Cabin on a Sunday.

V	L	L	G	R	J	K	C	C	S	T	E	D	W	T	Y	A	D
O	Z	U	L	A	M	L	Q	A	C	C	L	S	I	B	D	D	Q
K	L	M	I	O	E	B	X	X	D	D	L	Q	M	Q	Q	A	Q
T	B	X	O	S	G	J	S	K	G	Z	E	M	R	U	H	P	S
S	R	F	A	L	L	O	W	D	E	E	R	E	D	D	E	E	R
Q	O	E	W	J	E	C	W	N	W	O	T	E	Y	G	U	C	A
X	W	A	T	E	R	V	O	L	E	T	S	Y	Z	A	R	M	B
S	N	B	V	G	R	A	I	M	O	U	I	A	Y	G	O	U	B
L	R	B	O	X	I	H	X	O	O	W	P	P	Q	U	P	E	I
U	A	Q	B	T	U	O	S	M	O	N	I	G	X	R	E	R	T
K	T	E	P	W	Q	S	R	R	W	N	P	A	K	Y	A	H	V
H	K	S	S	G	S	O	B	G	E	C	O	R	H	G	N	S	C
Y	B	S	X	Y	D	F	B	M	H	T	N	Z	N	J	M	Y	D
W	P	F	M	L	E	R	A	H	N	I	A	T	N	U	O	M	G
L	R	K	E	C	R	R	D	M	J	I	R	W	K	P	L	G	F
F	R	Z	H	U	T	W	G	R	L	C	P	W	D	V	E	Y	Q
I	A	B	H	E	D	G	E	H	O	G	O	S	P	D	Y	P	M
H	K	M	N	N	X	P	R	N	S	M	S	T	O	A	T	R	J

Anagrams for a double whammy!

oar twelve  
why germ spy  
a math reunion  
earn me pint  
a resilient proplops  
ed erred  
large yes  
federal owl  
oxf  
barbit  
he hogged  
qi red rulers  
uh leader zooms  
a europe lemon  
torte  
saw eel  
wears threw  
worn brat  
barged  
toast

## WILL'S WILDLIFE QUIZ - COMPILED BY JULIA

- Nearly all songbirds and most other perching birds have a '3 front/1 back' toe arrangement. What is the correct term which describes this?
- Which animal has the most extreme sense of hearing?
- What is the name of the bat which usually feeds above water or from the surface of water?
- Name the only bird in England that climbs down trees head first?
- Which bird is the fastest swimmer?
- What is the favourite food of *Dysdera crocata*?
- How do kangaroos teeth differ from other grass eaters?

8. What Act protects water vole and their habitats?

9. Can you name the 3 species of vole that can be found on mainland Britain?

10. Can you identify the picture to the left - we know the top one is a clipart frog!

(answers on the back page, but no peeking!!)



## EVENTS MAY TO OCTOBER 2018

### BIRD SURVEYS AND WALKS

recording of bird species  
for BTO (British Trust for  
Ornithology)

The 3rd Saturday of every  
month

Meet at 9.45am in the cabin,  
ends at 12 midday.

Repeats at 12.15 until 2.30.

Please bring Binoculars if you can

### TREE WALKS WITH BEL HALE

Meet at the cabin at 1.30 ends  
at 3.30pm

1. Sunday April 8th - Bark,  
Buds and Flowers
2. Sunday June 24th -  
Summer Solstice
3. Sunday October 21st  
Autumn Glory

CROMWELL BOTTOM  
WILDLIFE GROUP  
PRESENTS:

**OPEN DAY 4th  
AUGUST  
10.00-4.00 see blogspot**

## WILL'S WILDLIFE QUIZ - ANSWERS



1. Anisodactyl
2. Bats
3. Daubentons
4. Nuthatch
5. Penguin
6. Wood lice
7. The roots of the teeth are closed. (They have 4 pairs of cheek teeth on either side of the Jaws. Only the front ones engagewhen they are worn out, they drop out and are replaced as the teeth migrate forwards.
8. Wildlife and Countryside Act 1981, Schedule 5, Section 9.4.
9. Field, Bank and Water Vole.
10. Female Vapourer moth with eggs.

HOW YOU CAN HELP AT CROMWELL BOTTOM

**Volunteers** are the foundation upon which our wildlife group is built. Our work helps secure the future of many precious habitats and species, enabling them to thrive.

We have many jobs to do, so no matter how much time you have there is ALWAYS something for you!

THURSDAY MORNINGS weekly at 9.30am is a good time to come and help.

On the SECOND SATURDAY of each month at 9.30am our work parties take place, arranged with Calderdale

Council.

Please come along to either, or both of these days - its best to check our blogsite for up to the minute information. You can click on the link below which will take you directly to the page.

**We can promise good fun, a sense of achievement and a sit down with the group at the end for a well-earned cuppa!**



### How to contact us (CLICK ON ONE OF THE LINKS OR ICONS BELOW).

We welcome your articles, photos, ideas, comments and would love to hear from you. We do, of course, retain editorial rights. **Your new newsletter team are Val, Jane & Lyn. We thank you for all your articles and photos for this**



[newsletter.cbwg@gmail.com](mailto:newsletter.cbwg@gmail.com)



[cromwellbottom.blogspot.co.uk](http://cromwellbottom.blogspot.co.uk)



find us on Facebook [/Cromwell Bottom Wildlife Group](https://www.facebook.com/CromwellBottomWildlifeGroup)